

A message from Mrs Naffati

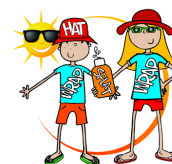
Thank you for an exciting first half term – I am looking forward to working with our children, parents and local community to continue the amazing ethos we have at New Invention Infants – your support is appreciated!

Recent events in Manchester

It is of course a terribly sad time for many families affected by the terrible events in Manchester this week. Some parents have been concerned about the impact this has on all of our children. If children want to talk and ask questions we welcome it. The most important thing is that all our children are reassured and are nurtured to feel safe wherever they go. Walsall Council has issued advice for every community to be vigilant, be alert but not alarmed and this in turn will make all our children feel secure.

Summer is on its way!

As the weather is ever-changing please try to check the forecast on your phone to ensure your child comes to school wearing appropriate clothing for the day's weather! Remember if the sun shines you will need to apply an all-day sunscreen, bring a hat to school and remember a water bottle – essential for all children to combat the heat!



Attendance

The table below celebrates the attendance of the best class(es) each week.

Week beginning 1 st May	Monkey Class, Stingray Class, Bumblebee AM and Caterpillar PM	100%
Week beginning 8 th May	Bear Class	99.3%
Week beginning 15 th May	Caterpillar AM and Dolphin class	100%

Summer Picnic



Last term we hosted a family Music night with a quiz and disco for the children; all the families who came said they loved it!! Our few committed PTA members are continuing to try to encourage family events and will be hosting a 'Summer Picnic' for the first time on Wednesday 14th June here at school. We are welcoming every family within our community to join us for a barbecue on the playground 5.30-7.00pm. We will set physical challenges for the children and sincerely hope you will support us at this event. As part of the evening we will be holding a 'bring and taste' session where we would love families to bring home-made picnic food from their own culture for everyone to taste-test! Families can then take home recipes and tips for how to cook it themselves at home. Instead of 'Great British Bake-Off' – we will have our own 'Great New Invention Picnic-Off!' So get moms, dads, aunties, uncles, nans and grand-dads in the kitchen making tasty treats – something from every community would be fantastic!!!



New Diary Dates

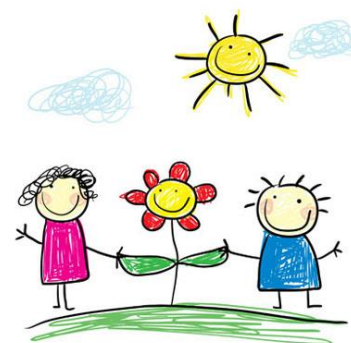
WHOLE SCHOOL	Monday 5 th June	All children return to school after the Whitsun break for the final half term.
NEW NURSERY CHILDREN	Monday 5 th June	We invite all families for our <u>new</u> Nursery Children due to start with us as our Afternoon intake in September 2017 to our Nursery Induction Evening 6.00-7.00pm.
NEW NURSERY CHILDREN	Wednesday 7 th June	We invite all families for our <u>new</u> Nursery Children due to start with us as our Morning intake in September 2017 to our Nursery Induction Evening 6.00-7.00pm.
NURSERY + RECEPTION	Thursday 8 th June	Nursery and Reception Physical Fun day Please send your child to school wearing sporty clothing e.g. tracksuit bottoms, trainers, pumps, shorts, tee-shirts or feel free to use your imagination. Should the weather be very hot, please ensure that your child has a suitable hat to wear and that you have applied sun cream with an appropriate factor.



		Nursery and Reception: 9:15 - 10:45 or 1:20 - 2:50 on the junior school field for fun physical activities and team games. Nursery parents may attend at the same session times as their children; Reception parents will be invited as follows: Panther 9:15 - 10:45, Tiger 9:15 - 10:45, Lion 1:20 - 2:50.
YEARS 1 & 2 	Friday 9 th June	Year 1 and Year 2 Physical Phun day (am) Please send your child to school wearing sporty clothing e.g. tracksuit bottoms, trainers, pumps, shorts, tee-shirts or feel free to use your imagination. Should the weather be very hot, please ensure that your child has a suitable hat to wear and that you have applied sun cream with an appropriate factor. Parents of pupils in Years One and Two are welcome to join us as we take part in a variety of fun team games on the junior field from 9.15. We expect to finish shortly before 11.00 o'clock.
HEALTHY WEEK – MONDAY 12TH – FRIDAY 16TH JUNE		
WHOLE SCHOOL	Monday 12 th June	Summer Shake (pm) to kick start 'Healthy week' Come and join us for a dancing extravaganza in the playground (weather permitting). An afternoon of fitness displays and dancing delights await as children from Reception, Year 1 and Year 2 perform an array of routines incorporating a variety of dance styles.
WHOLE SCHOOL	Monday 12 th June	Nursery AMs Trip to Twycross Zoo (No Nursery session for PM children today)
WHOLE SCHOOL	Tuesday 13 th June	Nursery PMs Trip to Twycross Zoo (No Nursery session for AM children today)
YEARS 1 & 2	Tuesday 13 th June	Year 1 and Year 2 Healthy workshops for parents and children together – join us as Streetly Academy show us ways to keep healthy and active. Sign up outside your child's classroom.
RECEPTION	Tuesday 13 th June	Reception Summer walk – Any family members are welcome to walk with the Reception Classes as they take a stroll to Littleton Road Park as they look for signs of summer! Please tell your child's class teacher if you are able to help.
NURSERY & RECEPTION	Wednesday 14 th June	Nursery and Reception Healthy workshops for parents and children together - join us as Streetly Academy show us ways to keep healthy and active. Sign up outside your child's classroom.
WHOLE SCHOOL	Wednesday 14 th June	Evening event for parents and children – Summer Picnic – 5.30-7.00 (see above for more information)
GYMNASTIC TEAM	Thursday 15 th June	Our incredible Gym team will be competing in the Black Country Gymnastics Competition today – more details to follow from Miss Wallace.
NURSERY & RECEPTION 	Friday 16 th June	All children will take part in Save the Children 'Den Day'. Being outdoors is a vital part of a child's growth both for their body and also their mind! Making decisions, working as a team, problem solving and resilience if something doesn't work are all crucial life-lessons which your child will explore during Den Day!
NEW RECEPTION CHILDREN	Tuesday 20 th June	We invite all families for our <u>new</u> Reception children due to start with us in September 2017 to our Reception Induction Evening 6.00-7.00pm. Meet the staff and find out all about your child's new class!
NURSERY & YEAR 1	Wednesday 21 st June	To help the children to learn about their topics first-hand The Animal Man will be visiting school today. Nursery will have the opportunity to meet some real jungle creatures. Year 1 will get the chance to get close to mini-beasts.
NEW RECEPTION CHILDREN	Thursday 22 nd June	We invite all families for our <u>new</u> Reception children due to start with us in September 2017 to our Reception Induction Evening 6.00-7.00pm. Meet the staff and find out all about your child's new class!

Save the date

- 03.07.17 – Year 2 trip to Stafford Castle (half of year group)
- 04.07.17 - Move through day
- 05.07.17 – Year 1 trip to Willenhall Park
- 05.07.17 - End of year reports go out to parents
- 07.07.17 – Year 2 trip to Stafford Castle (half of year group)
- 10.07.17 – Drop-in Parent's Evening - 4.00-7.00pm
- 12.07.17 – Reception trip to Broomey Croft Farm
- 18.07.17 – Reception Strawberry picking at Essington Fruit Farm – 4.00pm
- 19.07.17 – Year 2 Leavers Performance – from approx.9.15am
- 19.07.17 – Reception Farm Film Show & Strawberry Sale from 2.30pm
- 20.07.17 – Year 2 Leavers Performance – from approx. 9.15am
- 21.07.17 – Break up for the Summer holidays!



Have a lovely holiday!